

# M & V

*muses  
+  
visionaries*

The  
**HOME**  
*ISSUE*

**MARY MCDONALD**  
ARBITER OF STYLE

INSIDE  
**JULES REID'S**  
BEACH HOUSE

**JOHN ROBshaw**  
**ROBIN WILSON**

+

*TOUCHÉ CROCHE*  
FRESH SPRING FASHION

\$6.95 US MARCH / APRIL 2014

0 3 >



0 74470 26934 2

# Feature MARY MCDONALD

*"The use of color and pattern in millinery was a strong force for me that continues to translate into interiors to this day."* -Mary McDonald



McDonald with chief project manager Kenna Ryman

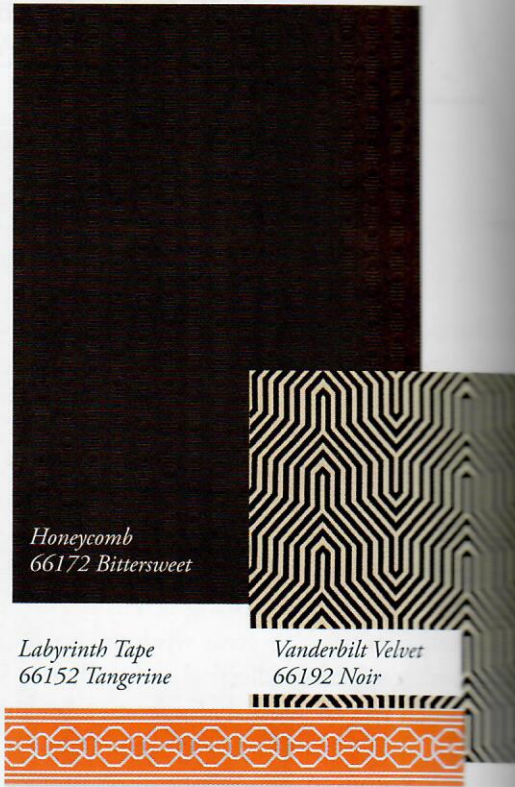


Photo by Miguel Flores Tramma

